

---

**GEOGRAPHY**

**9696/22**

Paper 2 Advanced Physical Options

**October/November 2016**

INSERT

**1 hour 30 minutes**

---

**READ THESE INSTRUCTIONS FIRST**

This Insert contains all the Figures and the Photographs referred to in the questions.



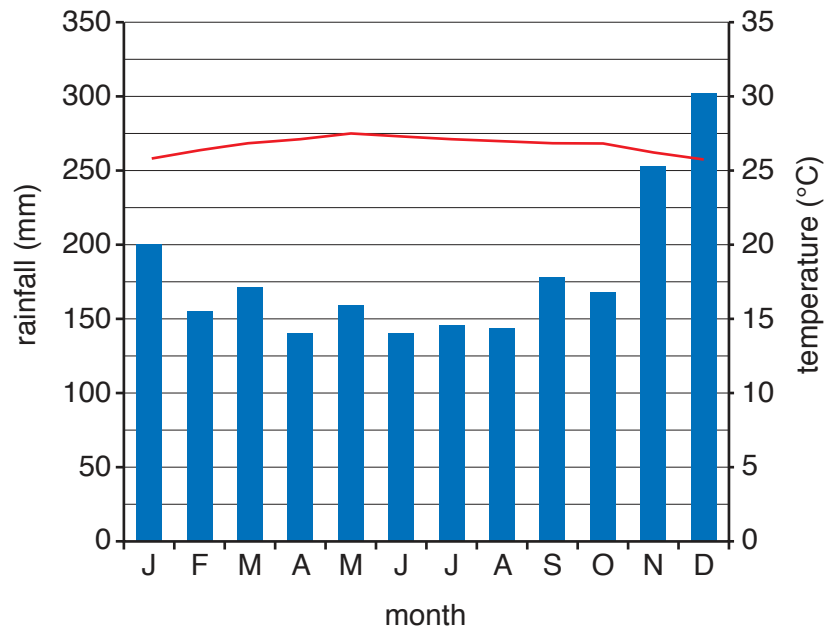
---

This document consists of 4 printed pages.

Fig. 1 for Question 1

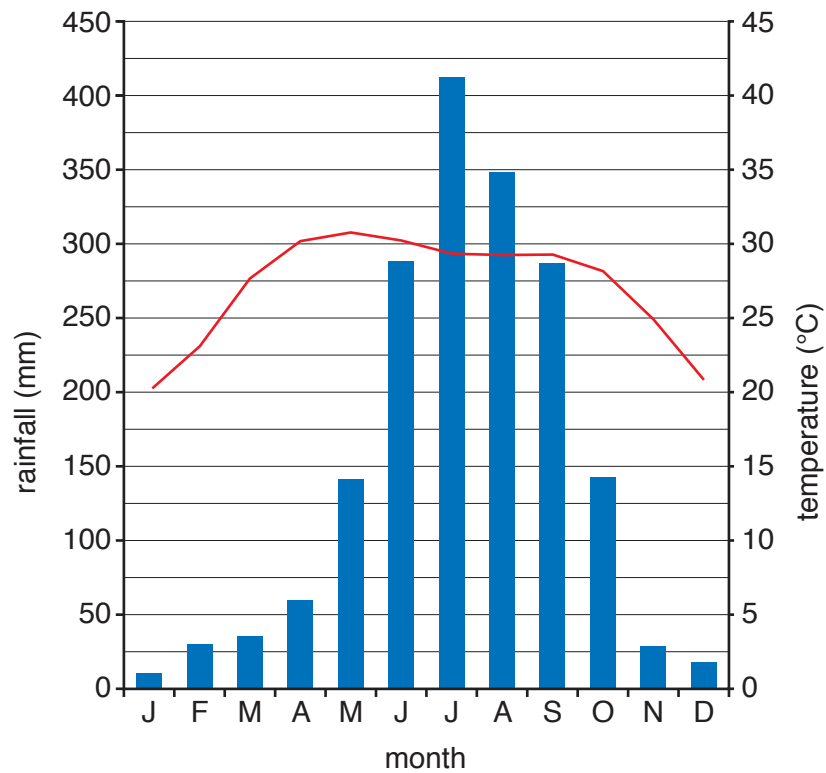
## Climate graphs for two tropical environments

Fig. 1A Singapore, Latitude 1.3°N



annual rainfall: 2378 mm

Fig. 1B Kolkata, Latitude 22.5°N



annual rainfall: 1735 mm

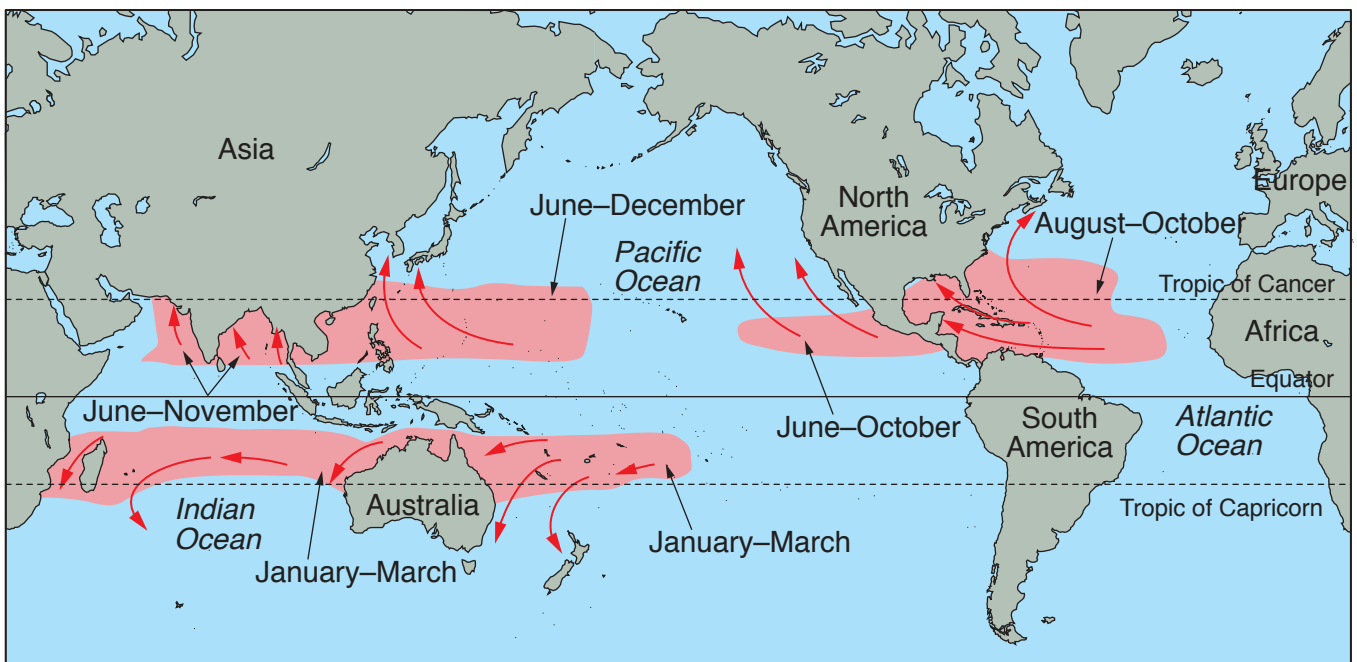
Photograph A for Question 4

A coral atoll in the Pacific Ocean



Fig. 2 for Question 5

The global distribution of tropical storms (cyclones)



**Photograph B for Question 8****Landforms in a hot desert**

---

Permission to reproduce items where third-party owned material protected by copyright is included has been sought and cleared where possible. Every reasonable effort has been made by the publisher (UCLES) to trace copyright holders, but if any items requiring clearance have unwittingly been included, the publisher will be pleased to make amends at the earliest possible opportunity.

To avoid the issue of disclosure of answer-related information to candidates, all copyright acknowledgements are reproduced online in the Cambridge International Examinations Copyright Acknowledgements Booklet. This is produced for each series of examinations and is freely available to download at [www.cie.org.uk](http://www.cie.org.uk) after the live examination series.

Cambridge International Examinations is part of the Cambridge Assessment Group. Cambridge Assessment is the brand name of University of Cambridge Local Examinations Syndicate (UCLES), which is itself a department of the University of Cambridge.